

Baby Bib

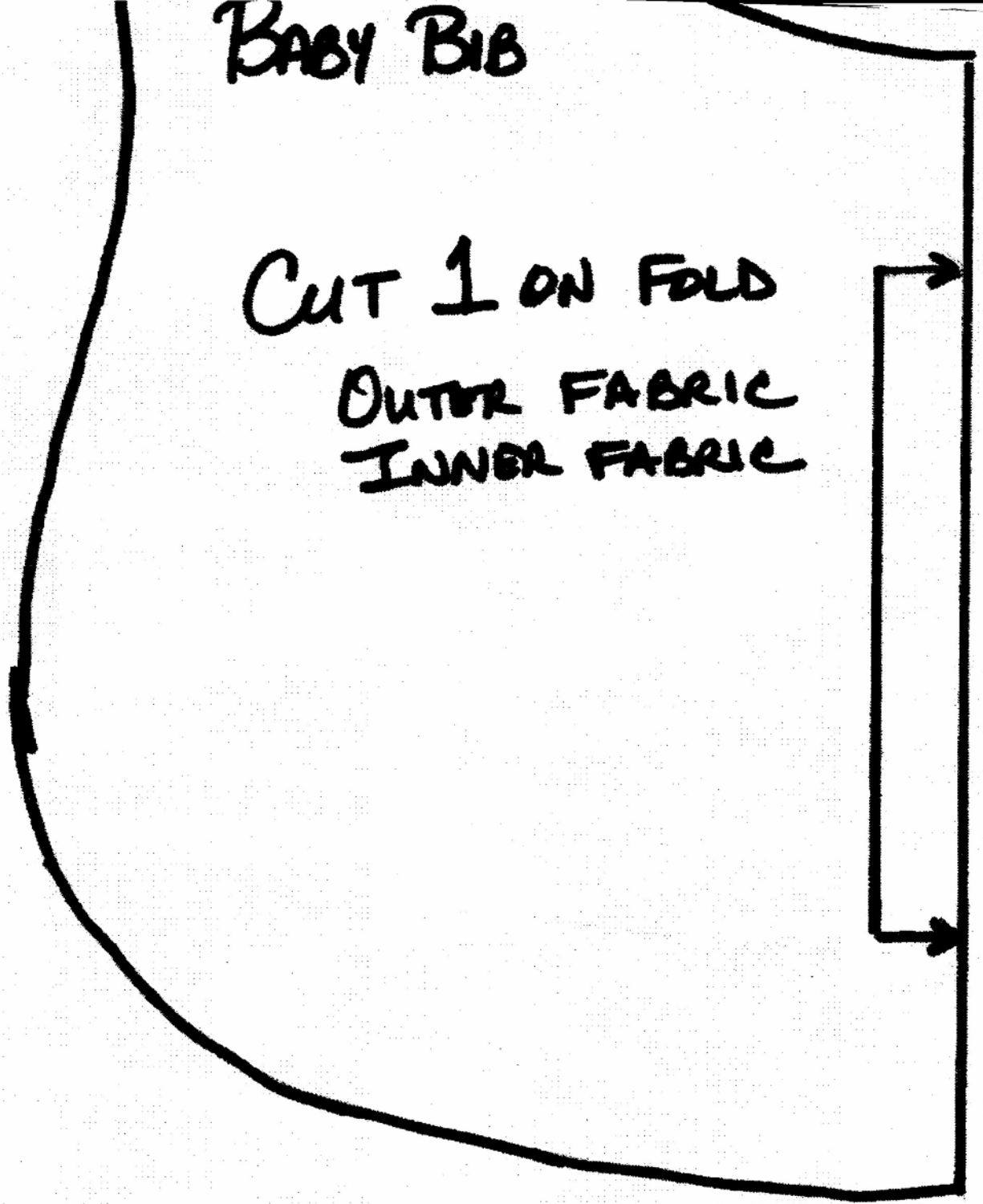
1. Print out and tape the two pieces of baby bib pattern together. Cut out one outer fabric and one inner fabric . Use washable fabrics such as cotton, knit, denim, etc.
2. With right sides facing, sew around the edge leaving a 1 1/2" opening for turning with a 1/4" seam allowance
3. Clip the curves if necessary
4. Turn the bib right side out through the opening
5. Press the bib flat
6. Edgestitch around the edge with a 1/4" seam allowance. This will enclose the opening that was left for turning
7. Closure options:
 - a. Attach 3/4" square hook and loop tape to sides of the strap
 - b. Attach snaps

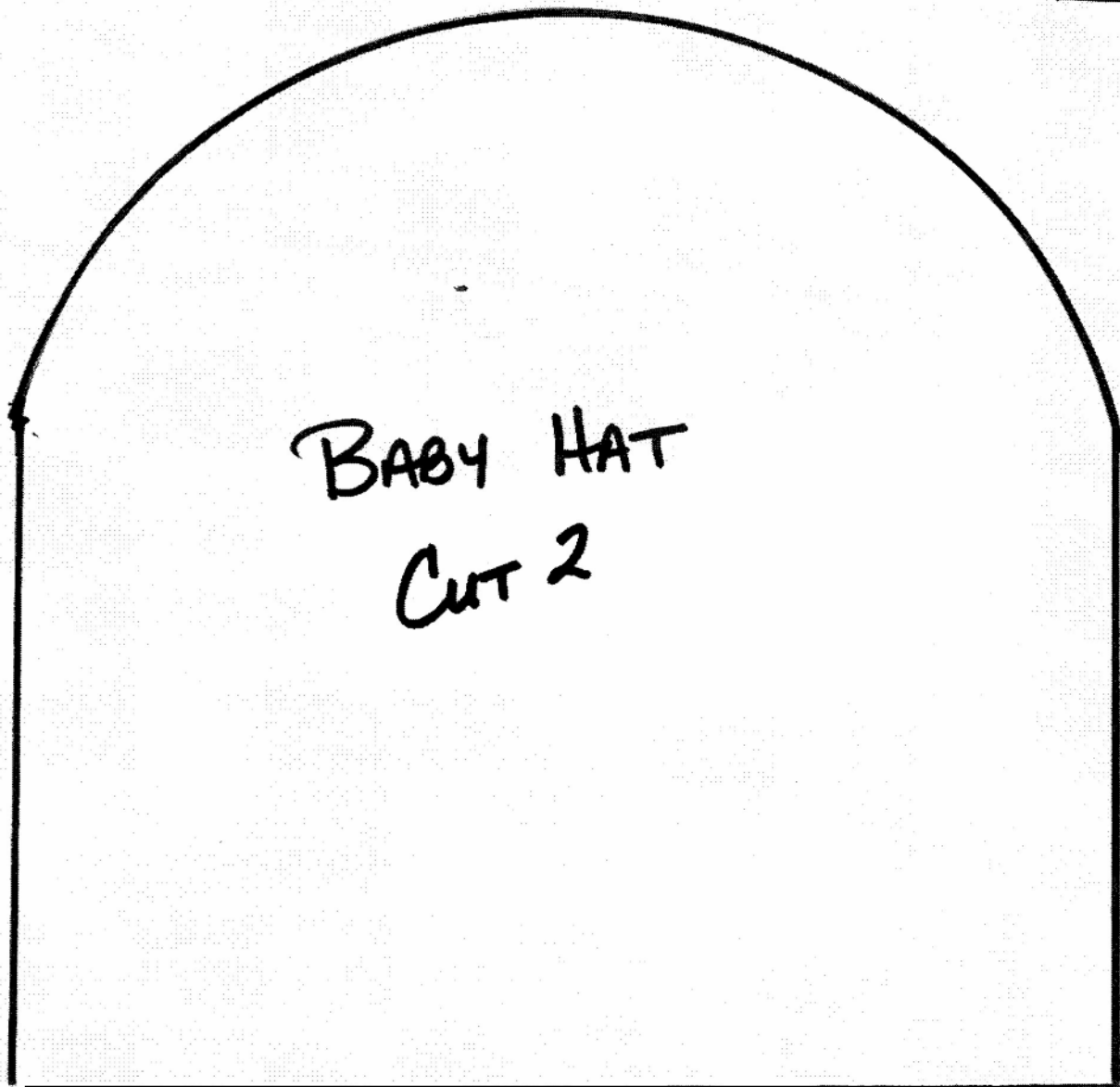
BABY BIB

CUT 1 ON FOLD

OUTER FABRIC

INNER FABRIC





Baby Hat

1. Cut out two of the pattern out of soft knit fabric - you can make a little smaller or larger
2. With right sides together, sew two pieces together with a $\frac{1}{4}$ " seam allowance using a straight or loose zigzag stitch around the curved sides.
Do not sew the straight edge together
3. Along the unsewn edge, fold up edge 2" to the inside of the hat or the wrong side
4. Sew around the circumference $\frac{1}{2}$ " to $\frac{3}{4}$ " above the fold
5. Turn the folded edge up 1" to the right side to create the hat band
6. On each side seam, stitch in the ditch over the band to hold it in place

Burp Cloth

1. Cut two pieces of fabric - each about 12" x 18" - it is ok to cut a little larger or smaller. Fabric should be washable such as soft cotton, knit, terrycloth. You can use two different types of fabric on each side.
2. With right sides facing, sew the outer and inner fabrics together using a 3/8" seam allowance leaving a 1 1/2" to 2" opening for turning . You can curve the corners (that does make it easier).
3. Clip curves and corners as necessary
4. Turn the burp cloth to right side out and press
5. Edgestitch the pressed burp cloth.

Baby Blanket

Fabric: Soft nursery flannel is a great choice

If you want to make a warmer blanket, add a layer of cotton batting

Size Recommendations: Large: 30" x 40"
 Small: 28" x 35"

1. Cut your showcase fabric, backing fabric and batting (if using) to size
2. Stack showcase fabric and backing fabric with right sides together - if using batting, place it on the stack as well.
3. Sew around the four sides with a 1/2" seam allowance leaving a 5-6 inch opening for turning - curve the corners if you want
5. Trim any fabric that expanded while sewing and clip corners.
6. Turn right side out , press and edge-stitch